

North Sac Valley IRWM Board

2024 Summer Hydrology and partial Groundwater Level Update

Ronna Bowers
Regional Coordinator
DWR Northern Region Office

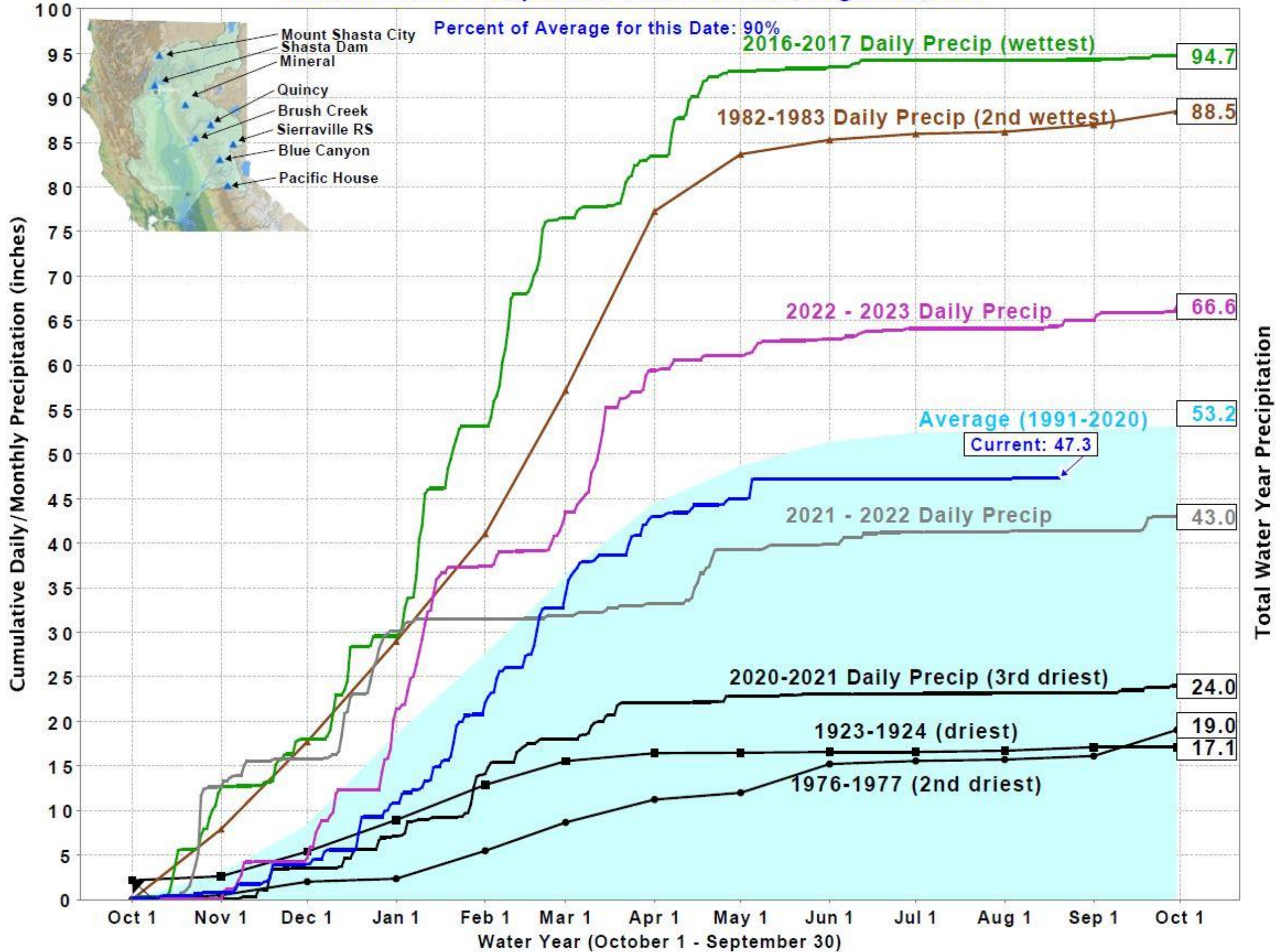
Ronna.Bowers@water.ca.gov
530-489-8672



Outline

- **CDEC Precipitation Index**
- **NOAA Climate Prediction**
- **California Water Watch**
- **California Groundwater Live**

Northern Sierra Precipitation: 8-Station Index, August 20, 2024

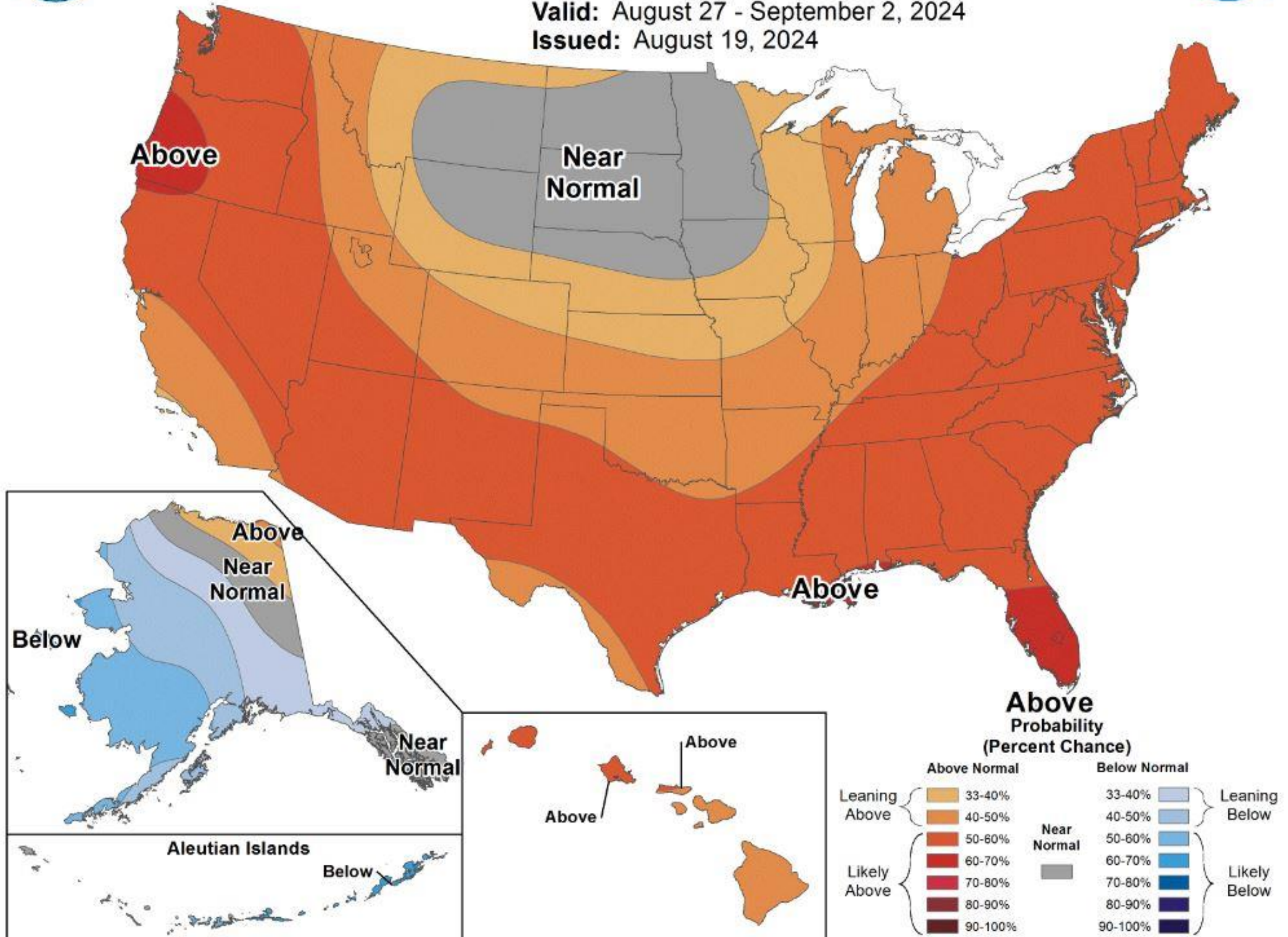




8-14 Day Temperature Outlook



Valid: August 27 - September 2, 2024
Issued: August 19, 2024



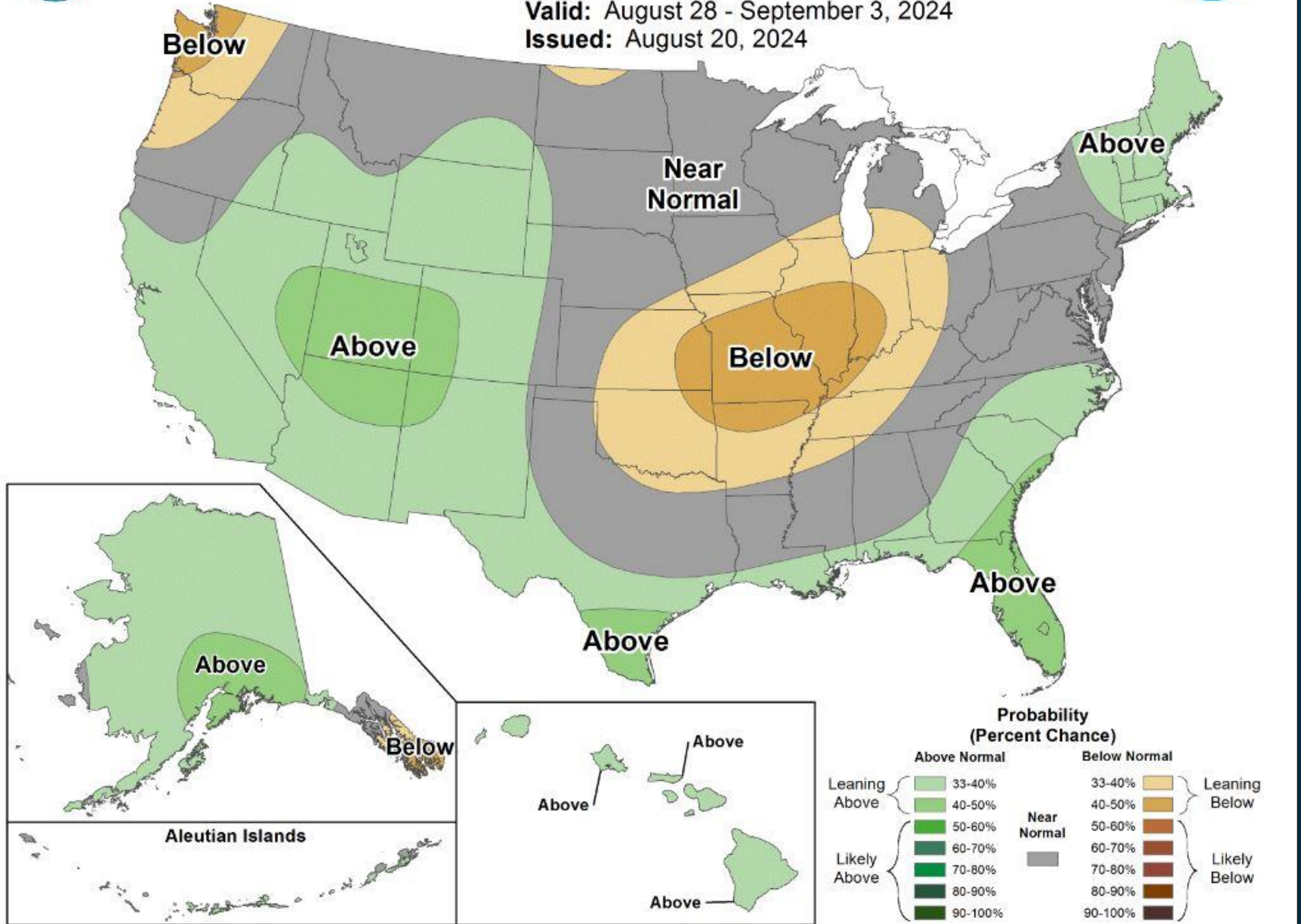


8-14 Day Precipitation Outlook



Valid: August 28 - September 3, 2024

Issued: August 20, 2024



California Water Watch



CALIFORNIA DEPARTMENT OF
WATER RESOURCES

PUBLISHED JULY 15, 2024

CALIFORNIA HYDROLOGY UPDATE

CONDITIONS AS OF JUNE 30, 2024



The California Hydrology Update is a regular summary of current weather conditions in the State of California and serves as a supplement to the data on the [California Water Watch](#) website. It is produced by the California Department of Water Resources Hydrology Section and Sustainable Groundwater Management Office teams. For tips and resources on how to make water conservation a way of life, please visit [saveourwater.com](#).

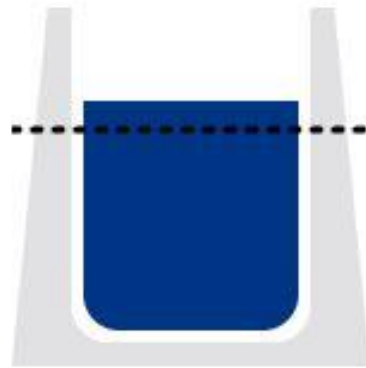
<https://cww.water.ca.gov/> click **Hydrology Update**

https://cww.water.ca.gov/service/document/hydroreport?_=1717177127989

California Water Watch - Statewide Statistics

Major reservoir levels

Reservoirs get us through the dry months



114%

of average levels

Updated daily

[More about reservoirs](#)

Statewide snowpack levels

Snow melt feeds our reservoirs & rivers

0% of average peak snowpack



Updated daily

[More about snowpack levels](#)

Monitoring Wells
Below Normal Level

28%

Dry Wells Reported - Year to Date

127

CalGWLive Website



California's Groundwater Live

[Current Conditions](#) [Groundwater Levels](#) [Well Infrastructure](#) [Land Subsidence](#)

California's Groundwater Live

CALIFORNIA'S LATEST GROUNDWATER INFORMATION AND CONDITIONS



SECTIONS

[CURRENT CONDITIONS](#)

[GROUNDWATER LEVELS](#)

[WELL INFRASTRUCTURE](#)

[LAND SUBSIDENCE](#)

[About](#)

[How to access data](#)

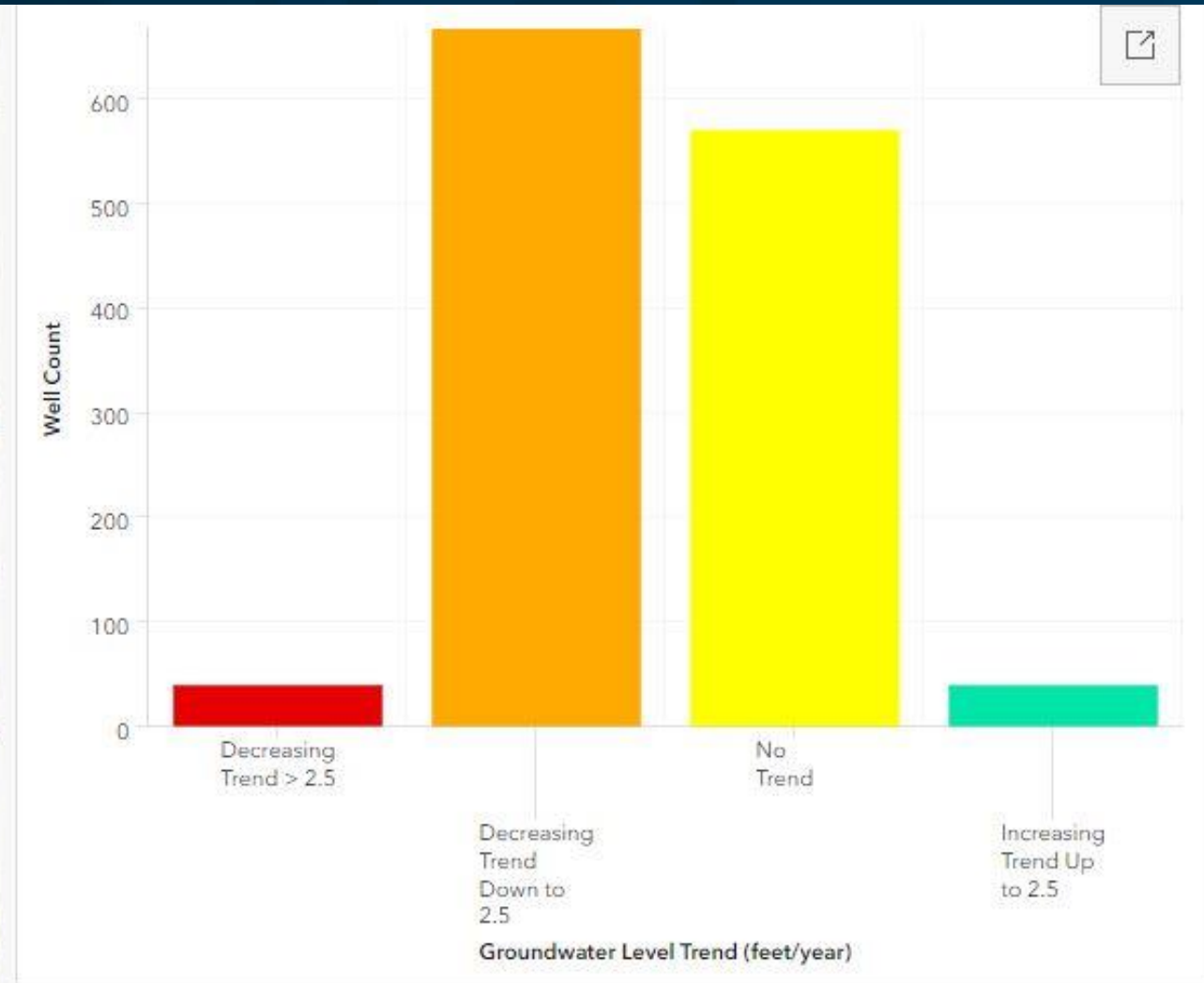
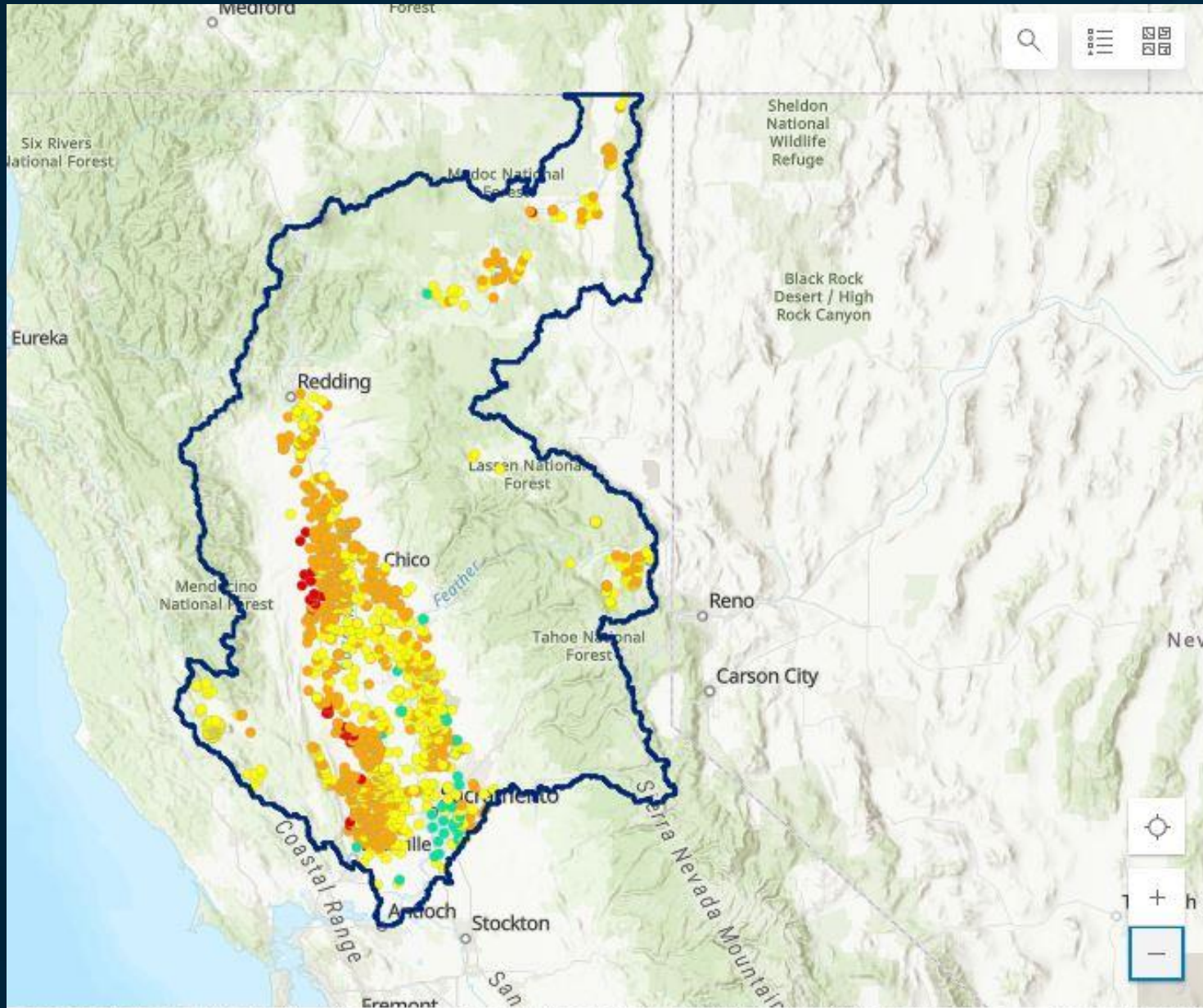
[Questions/Feedback: calgw@water.ca.gov](mailto:calgw@water.ca.gov)

<https://sgma.water.ca.gov/CalGWLive/#stats>

CalGWLive Website

Sacramento River Hydrologic Region

20-Year Groundwater Level Trend - data from last 18 months



Monitoring Wells

4.8k

Total

Monitoring Wells

1.3k

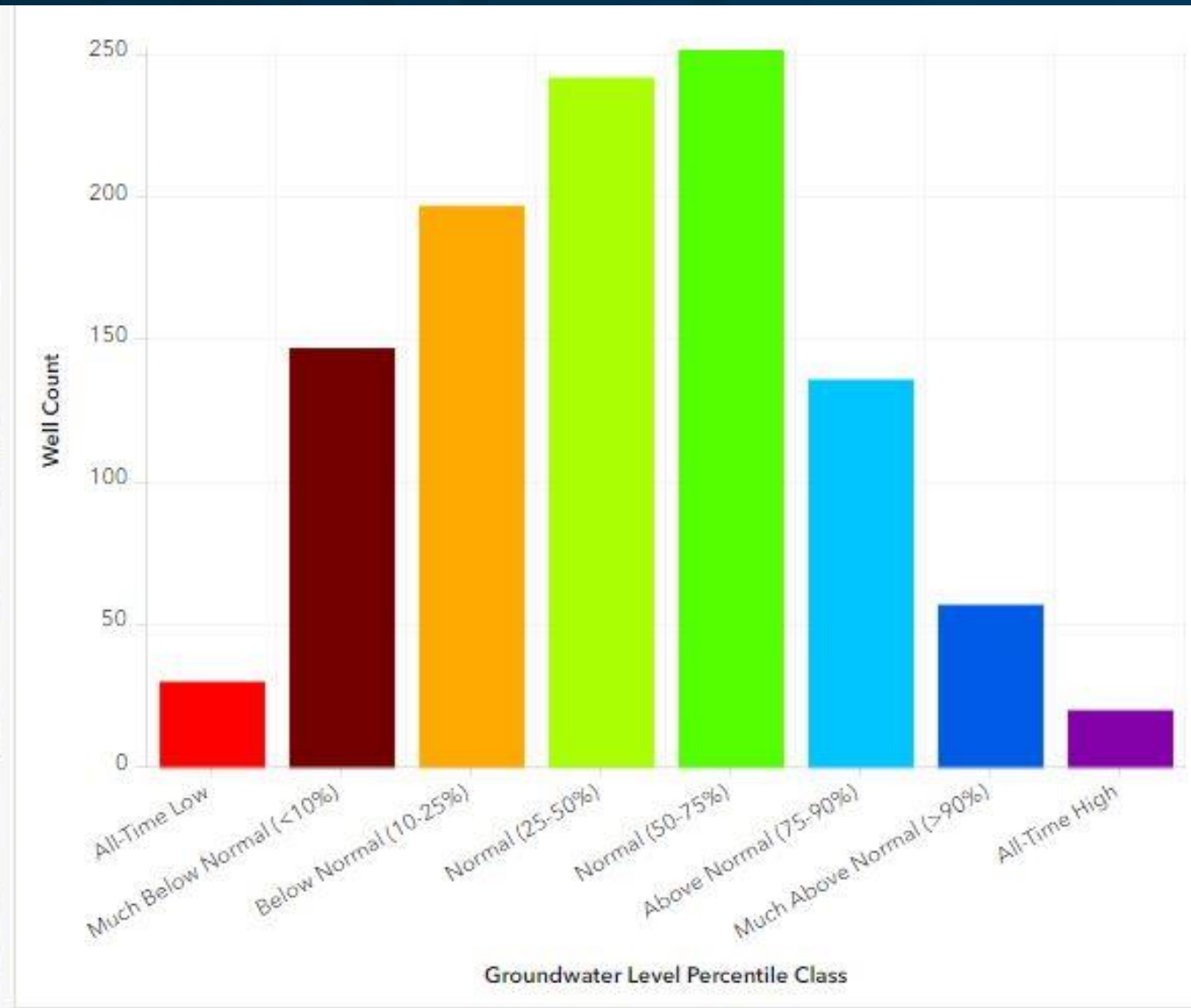
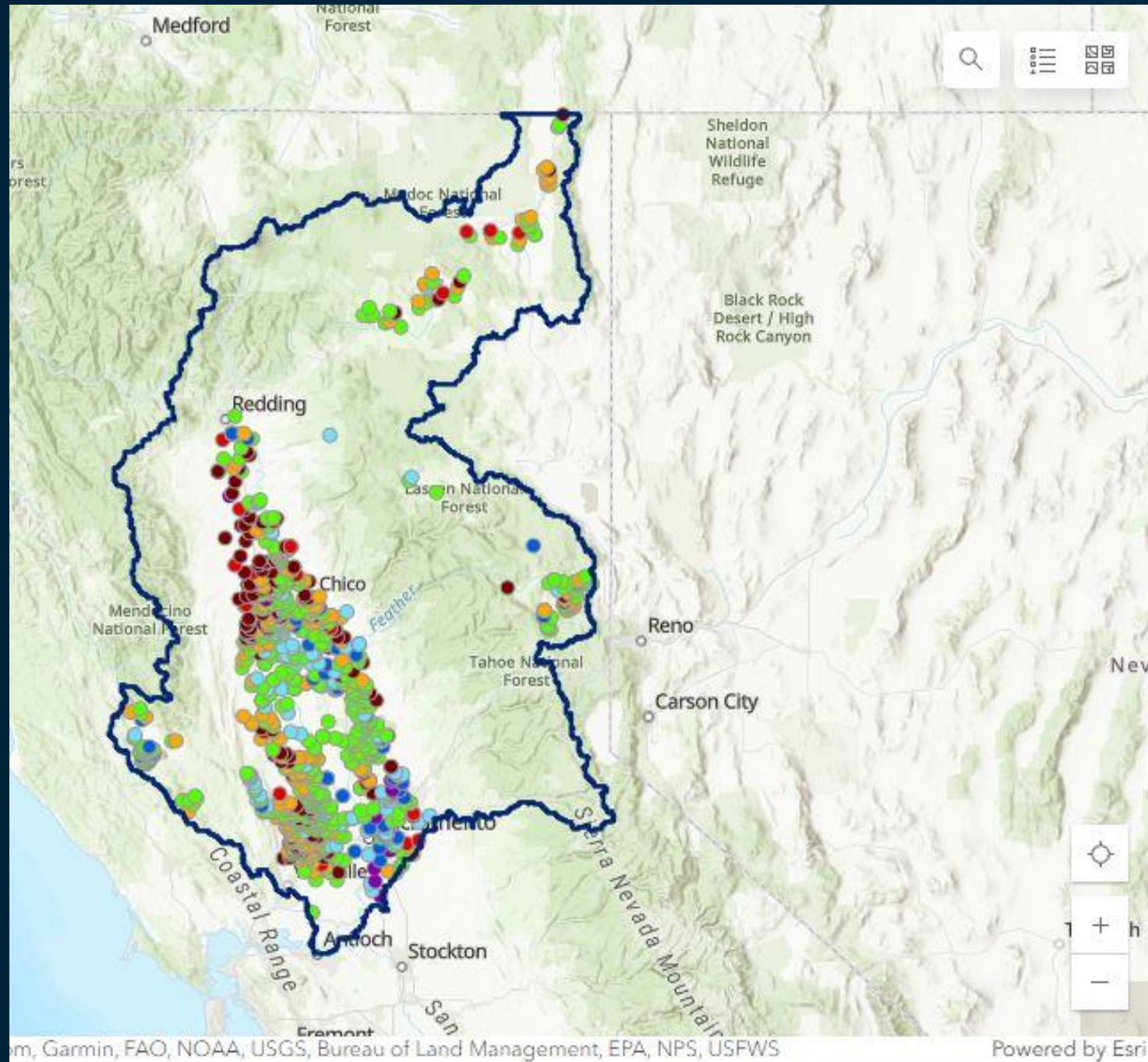
Based on Selection

is dashboard.
how this dashboard was created.
ca.gov to connect with the California's Groundwater Live Project Team.

CalGWLive Website

Sacramento River Hydrologic Region

Current Groundwater Level Conditions - data from last 18 months - COMPLETE



Monitoring Wells

3.9k

Total

Monitoring Wells

1.1k

Based on Selection

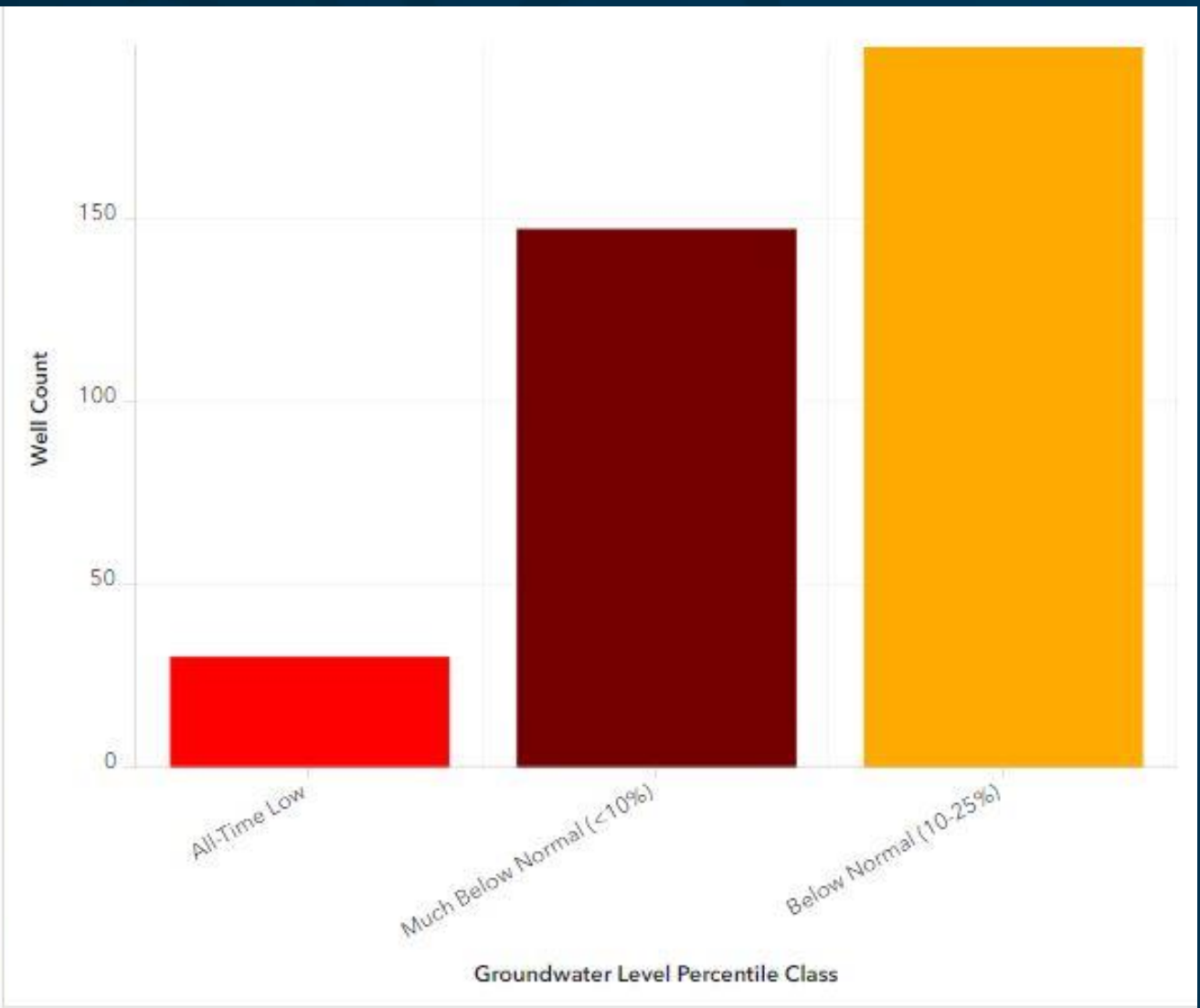
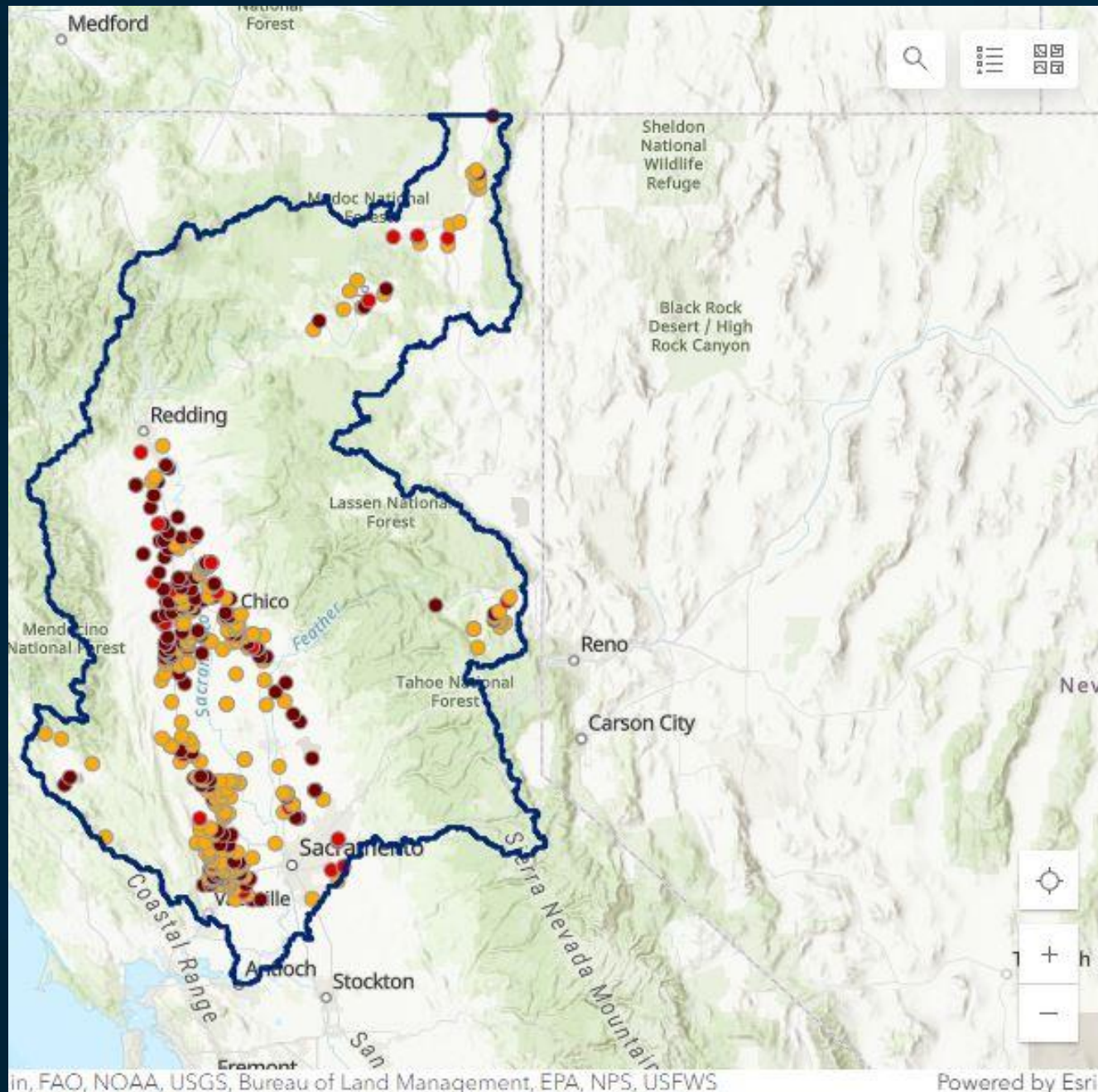
Dashboard.
This dashboard was created.
to connect with the California's Groundwater Live Project Team.

<https://sgma.water.ca.gov/CalGWLive/#stats>

CalGWLive Website

Sacramento River Hydrologic Region

Current Groundwater Level Conditions - data from last 18 months – **Below Normal ONLY**



Monitoring Wells
3.9k
Total

Monitoring Wells
374
Based on Selection

<https://sgma.water.ca.gov/CalGWLive/#stats>

Current Well Infrastructure Information

Domestic Wells



263,796 Total
1,420 WCRs
Received Year to Date

Irrigation Wells



58,913 Total
516 WCRs
Received Year to Date

Public Supply Wells



13,858 Total
Active
Public Supply Wells

Reported Dry Wells



129 in 2024
24 Reported
In the last 30 Days

New! Explore [Dry Domestic Well Susceptibility](#) within Groundwater Basins

<https://sgma.water.ca.gov/CalGWLIVE/#wells>

Dry Well Reporting: <https://mydrywatersupply.water.ca.gov/report/publicpage>

List of Counties: https://tableau.cnra.ca.gov/t/DWR_SGM/views/mydrywatersupply/Table.pdf?csrt=17124359341917200630

Map of Reported Dry Wells: https://tableau.cnra.ca.gov/t/DWR_SGM/views/mydrywatersupply/Map.pdf?csrt=17124359341917200630

***Groundwater is a renewable resource
and CAN be managed sustainably***



**Northern Region Office
2440 Main Street Red Bluff
Division of Regional Assistance
Sustainable Water Management**